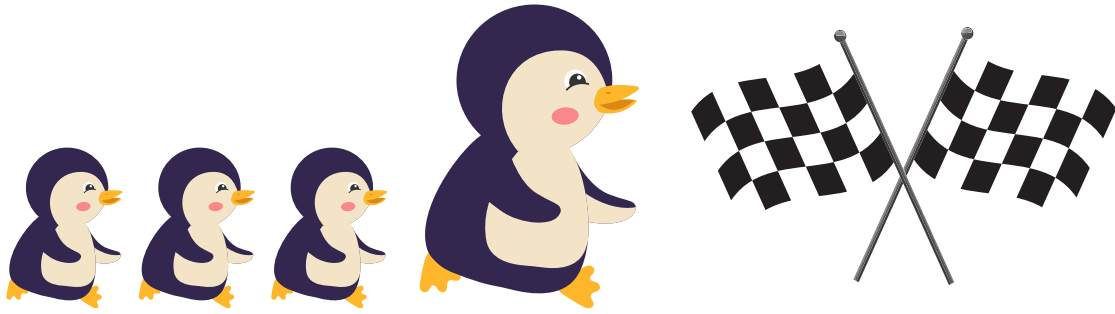


You will need: A paper roll, scissors, glue, a long piece of string & colour paper.



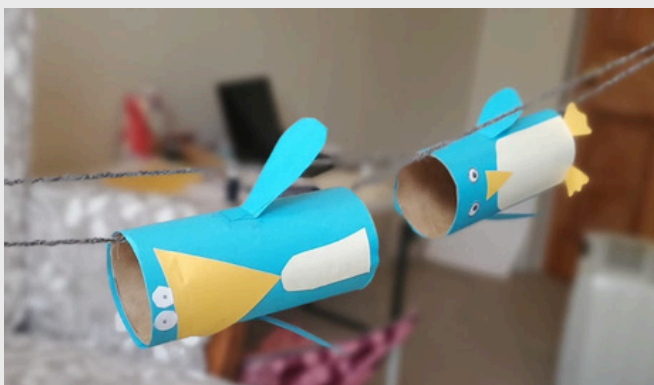
1 Gather craft materials.



2 Decorate a toilet roll to be a little blue penguin.



3 String up your strings alongside each other and.. RACE YOUR KORORĀ!



Things to think about while playing:

*What happens to the speed of your penguin, at the different angles you place your string?

If you add extra weight to your penguin - does it go faster or slower?

What happens to the speed of your penguin when the string is pulled tight and when the string is loose?